

PARTNERS:



CONNECT

Email: info@sihambasonke.org

Tel: +27827763810

www.sihambasonke.org



Zithulele Village, Mqanduli,
Eastern Cape, South Africa

Be part of the revolution!
Come volunteer or spread
the word.



facebook.com/sihambasonke.walkingtogether



instagram.com/sihambasonke

DONATE

BE PART OF THE CHANGE

As a launchpad for community transformation, our goal is to connect community members with opportunities that will unlock their potential and empower them. Your donations can help maximize our impact, enabling these platforms to function optimally & ultimately helping them to grow to their full potential. Here's how:



- **R100:** Feed 10 learners in after school mentor sessions & sponsor a chess board.
- **R1000:** Cover the costs for a mentor's ICDL computer training.
- **R10000:** Pay for a student's gap year expenses in order to raise up another rural mentor.
- **R100000:** Build a community homestay to help accommodate more staff & volunteers to increase our capacity.

Account Name: Sihamba Sonke

Bank: First National Bank

Cheque Account No: 62759245676

Branch Name: Umtata Mall

Branch Code: 210643

Please visit our website for instructions if your donations require 18A Tax Certificates.



SIHAMBASONKE

Walking Together



WHAT WE DO

INVEST IN MENTORS



Skills
Development



Character
Development



Education



Small Business
Support



ENABLE THE NEXT GENERATION



Chess



Agriculture



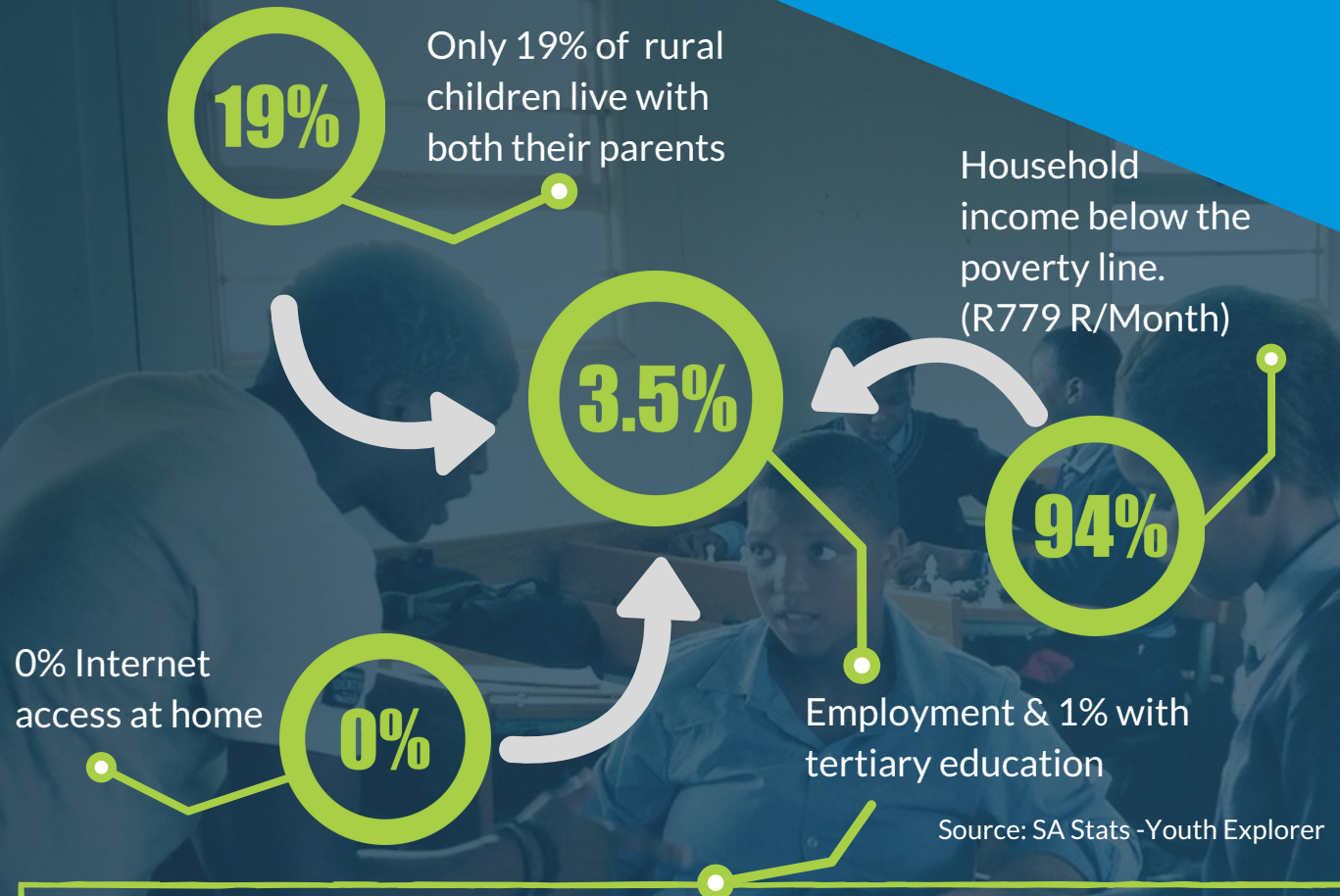
Sports



Safe Space
Creation

One of the key issues facing the South African labour market is an excess of unskilled labour.
- Department of Labour

WHY WE DO



As seen from the stats above, many factors play a role in the 3.5% youth employment crisis in rural South Africa. We aim to address this issue *holistically*, by investing in mentors in all areas mentioned above. To break the cycle of poverty, we make use of various platforms to establish a mentorship culture. We then help raise up the next-generation leaders through local mentors to inspire the youth with their own lives & tell stories of hope in their own context.

WE BELIEVE EVERY CHILD NEEDS A LOCAL MENTOR